

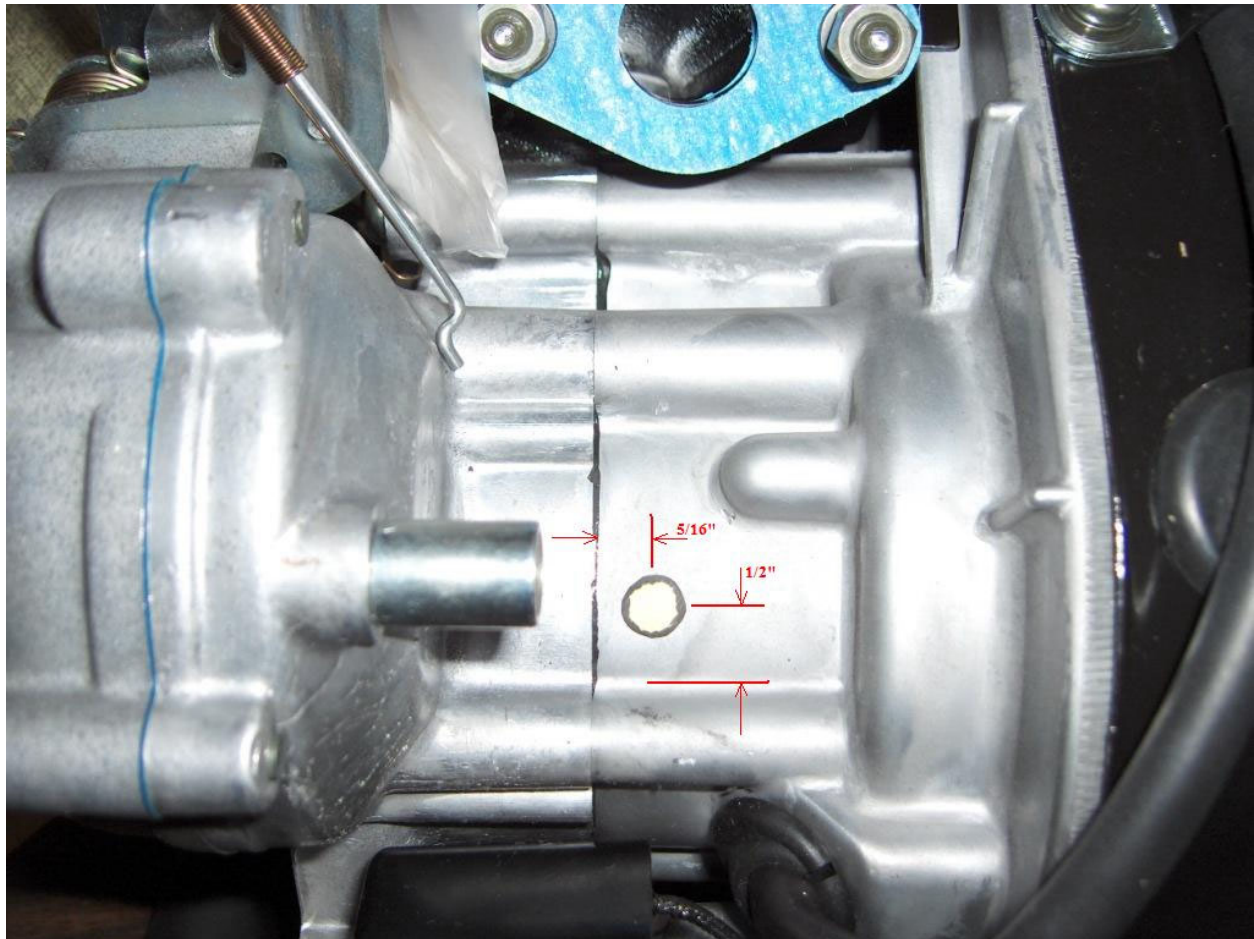
Fuel Pump Kit Installation

Required tools:

- Drill
- 21/64" drill bit
- 1/8" pipe tap
- Teflon tape
- Wrench

- 1) If there's not enough room to easily reach the location in 'Picture #1', you may need to either remove the carburetor. If more room is needed you may be able to loosen the motor and slide it forward, or in some cases you may need to remove the motor from the chassis.

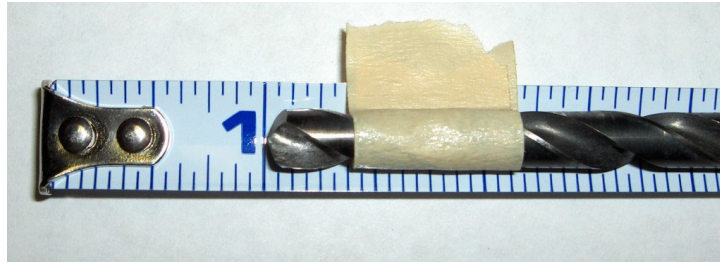
Picture #1



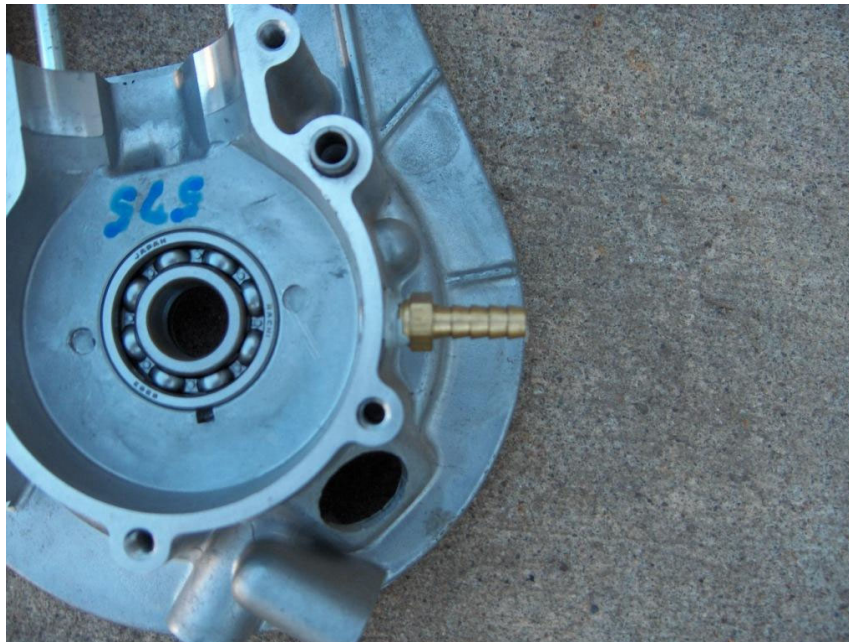
- 2) Once the crank case location in 'Picture #1' is accessible, mark the drill location as depicted in 'Picture #1'.
- 3) Before drilling, remove the spark plug and lower the piston as low as it will go (bottom dead center) in the cylinder.
- 4) Using an air source such as an air compressor, begin to blow a low amount of air pressure into the cylinder through the spark plug hole. (Roughly 10 PSI) It's helpful to have two people for this step. **WARNING:** *Too much pressure will blow out the crank seals!!!*

Fuel Pump Kit Installation

- 5) Using a $21/64$ " drill bit, carefully place a piece of tape $3/8$ " from the tip as shown in the picture below.



- 6) Carefully drill a hole into crank case at the marked location from step #2. The air pressure coming from the cylinder (step #4) will blow the shavings out as the drill bit penetrates the crank case. **WARNING:** *Although you want the drill to completely enter the crank case, do not drill too far into the crank case as you can damage the crank.*
- 7) Using a $1/8$ " pipe tap, place tape $3/16$ " from the tip like we did earlier with the drill bit. Then grease the tip of the tap. This grease will help catch the shavings.
- 8) While blowing air into the cylinder again, tap the hole in the crank case. Remove the tap occasionally to ensure the threads do not completely enter the case. **WARNING:** *Be sure not to completely tap into the case. You want to stop short so when the barb adapter is installed it can't screw completely into the case. If it does, it will be hit by the crank causing damage.*
- 9) Place three wraps of Teflon tape on the barb adapter threads, and screw into the hole. Approximately half of the threads should remain outside the case after the barb adapter has been completely installed as shown below.

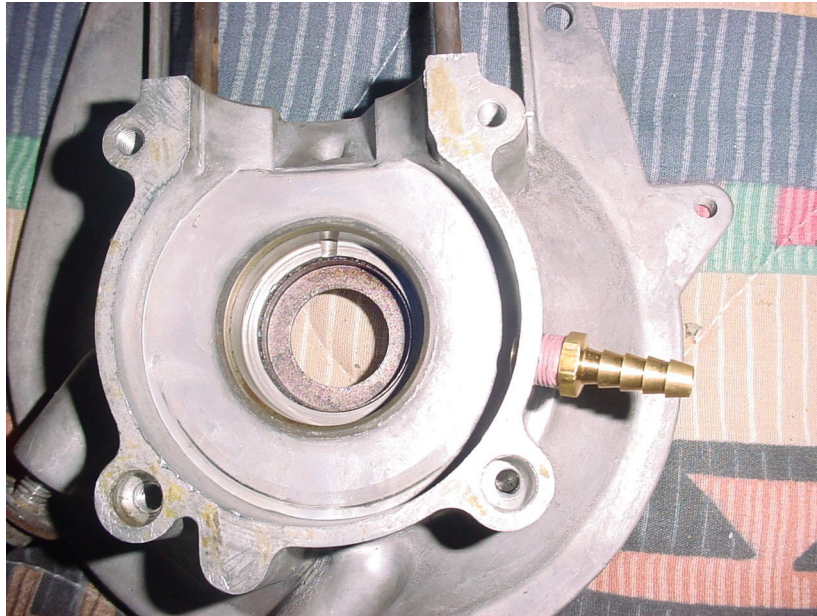


Suzuki

Fuel Pump Kit Installation



Kawasaki



- 10) Connect a gas line between the barb adapter and the pulse barb of the fuel pump. Connect the other gas lines to the fuel tank and carburetor as indicated by the fuel flow arrows on the fuel pump. (See below illustration)

Fuel Pump Kit Installation

